

How to Export a Polygon Shape File from SMS

Summary: FieldView Plus users can use the FieldView website to upload Shape Files and transfer them wirelessly to their iPad to display as Imported Maps within FieldView (version 2.18+). The Shape File must be a **polygon format** (not points) for the FieldView website to import the files correctly, this tutorial will show you how to export a polygon shape file from SMS.

Step #1: Build a Grid or Contour Map of your operation.

- Select your operation and build a “New Map” of the operation.
- Select the attribute that you want to export (box 1 below)
- Select either the Grid Map or Contour Map (box 2 below). Note Spatial and Smart Rectangle Maps export as points, while Grid and Contour Maps export as polygons.

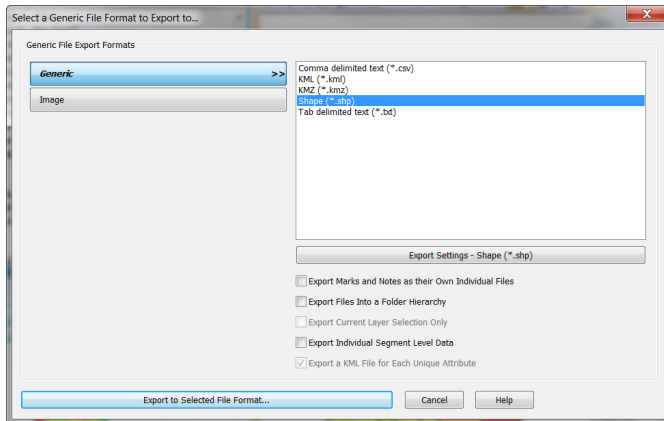
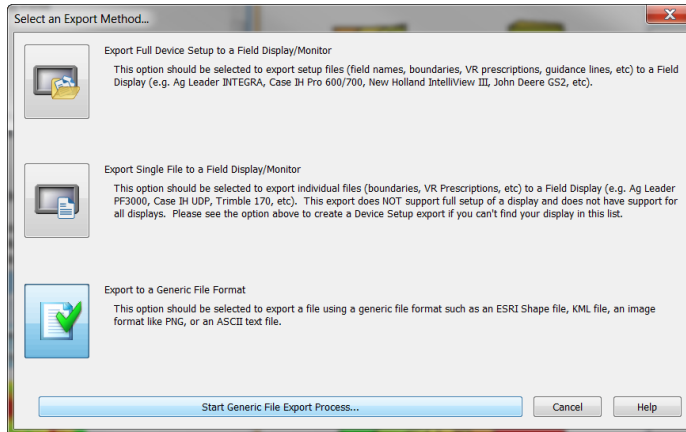
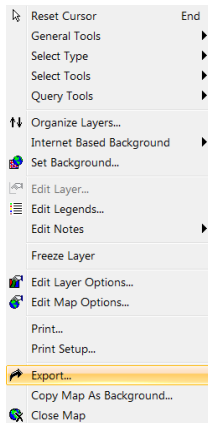
The screenshot shows the FieldView Plus interface. The main map area displays a color-coded field map. The right-hand panel, titled 'Map 19 Layers', shows a layer named 'Potash (0-0-6 | 2013 | Raul C)' which is checked. Below the layer name is a dropdown menu currently set to 'Rate Applied(Mass)'. Below the dropdown are several icons, including a grid icon and a contour icon. Two blue boxes with arrows point to these elements: box '1' points to the dropdown menu, and box '2' points to the grid icon. Below the icons is a 'Transparency - 100 %' slider. At the bottom of the right panel is a statistics table for the selected layer.

Rate Applied(Mass) (lb/ac)		
305.51 - 408.52	(8.26 ac)	
261.06 - 305.51	(10.33 ac)	
234.19 - 261.06	(10.56 ac)	
193.00 - 234.19	(9.79 ac)	
120.70 - 193.00	(12.21 ac)	
47.09 - 120.70	(11.03 ac)	
0.00 - 47.09	(8.24 ac)	

Statistics(Selected / All)	
Minimum	--- / 17.23 lb/ac
Maximum	--- / 337.47 lb/ac
Average	--- / 190.57 lb/ac
Total	--- / 13,421 lb
Area	--- / 70.43 ac
Length	--- / 86,582 ft
Count	--- / 32

Step #2: Export the map to a Shape File.

- Right click on the map and select the export button.
- Select the “Export to a Generic File Format” option, and click “Start Generic File Export Process”.
- Then select a “Shape (*.shp)” file type, and click “Export to Selected File Format”.



Step #3: Upload “.shp”, “.shx” and “.dbf” files to FieldView Web.

