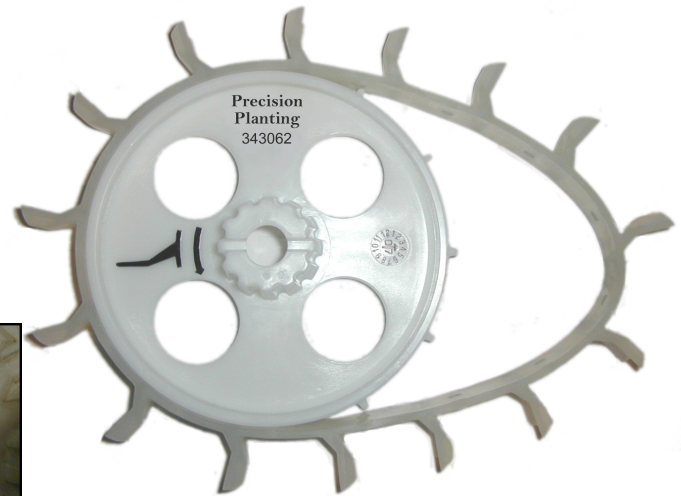


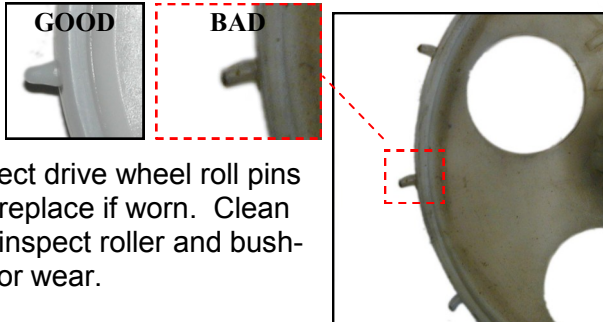
Installation Instructions

Step 1 Remove old seed belt.

Step 2 Spin drive wheel on bearing and look for wobble during rotation. If wobble is more than 1/16" replace drive wheel. (part # 343062) Examine drive wheel teeth and replace if damaged or severely worn.



Shown here with a Precision Planting Drive Wheel (not included).



Step 3 Inspect drive wheel roll pins and replace if worn. Clean and inspect roller and bushing for wear.

Step 4 Examine belt housing for the following.

- Dents that could rub against belt.
- Rough edges at bottom of housing.
- Deep wear marks from belt rubbing against side.
- Warped housing (place on flat surface to check for flatness)

Step 5 Clean rust and debris out of belt housing with a wire brush or wire wheel. Spray interior of housing with aerosol graphite to reduce belt drag and prevent corrosion.

Step 6 Install the SureFire belt over the drive wheel. Make sure that belt direction matches the picture on the drive wheel.



Step 7 Place roller and bushing in belt and stretch until 1/4" x 1-1/2" bolt slides through belt housing and bushing.

Note For John Deere housings only!! John Deere belt housings are typically narrower than Kinze or Precision belt housings toward the roller. To reduce potential drag on the SureFire belt, dimple the metal back cover OR place a 1/4" washer on the 1/4" x 1 1/2" bolt between the bushing and metal back cover.

Step 8 Place metal back cover over bearing shaft and over bolt sticking through roller bushing. Install nut, and finger tighten. Place (4) 1/4" x 1/2" bolts through holes in the belt housing. Install nuts, and finger tighten.

Questions? Check the website: www.precisionplanting.com or call us at 309-925-5050.



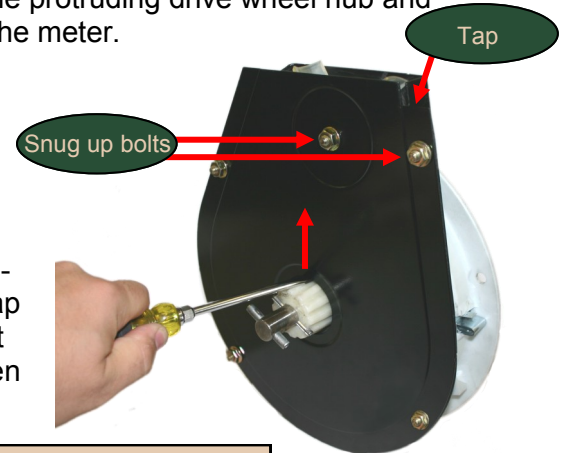
Installation Instructions Continued

- Step 9** Align belt by placing a large flat blade screwdriver between the protruding drive wheel hub and the metal cover, and prying the cover toward the exit end of the meter.



While the slop in the bolt holes is all pried toward the exit of meter, snug up the bolt holding the roller, and the 1/4" x 1/2" bolt nearest it.

Now, spin the bearing shaft to see if the belt is dragging on the sides of the housing. If it is dragging, tap the metal cover back toward center. Retest the belt until it is centered as close as possible. Then tighten all nuts.



To maximize the performance of SureFire belts use Precision Planting BullsEye® seed tubes to ensure accurate placement of seed.

Annual Maintenance

- 1) Clean all corn and debris out of meter.
- 2) Examine belt housing for dents or rough edges at bottom of meter.
- 3) Check each flight of belt for damage from obstructions or rodents.
- 4) Rotate meter to make sure belt does not have excessive drag in belt housing.
- 5) Replace belt if it has damaged flights, feels inflexible or is more than 3 years old.
- 6) Rotate meter so all flights are hidden within belt housing to protect from damage during storage.
- 7) Store in dry, rodent free container.
- 8) **Test meters on MeterMax® Test Stand to insure maximum performance.**

Note: Do not use solvent based lubricants such as WD-40™ on finger meters.

Troubleshooting Guide

Problem	Solution
SureFire Belt will not center in belt housing.	<ol style="list-style-type: none"> 1 ► Drive wheel wobbles on shaft. 2 ► Belt housing is warped. 3 ► John Deere belt housing needs to be widened with washer or dimpled. 4 ► Belt is warped and does not track straight.
Poor spacing of seed	<ol style="list-style-type: none"> 1 ► Verify SureFire Belt is installed in the right direction. 2 ► Make sure seed hopper is correctly aligned onto row unit. 3 ► Check for debris in meter or belt. 4 ► Check for obstruction in seed tube.

Always pay attention to your seed monitor, operating manual, and the amount of seed you are planting compared to your expectations.

Warranty: Precision Planting Inc. warrants this product to be free from defects in material or workmanship during the first year of service. Our obligation under this warranty shall be limited to repairing or replacing, free of charge to the original purchaser, any part that in our judgment shall show evidence of such defect, provided further that such part shall be returned within thirty (30) days from the date of failure – routed through the dealer from whom the purchase was made. Shipping charges prepaid.

Precision Planting shall have no obligation or liability of any kind on account of any of its equipment and shall not be liable for special or consequential damages. This warranty does not extend to loss of crops, loss because of planting delays or any expense or loss incurred for labor, supplies, substitute machinery, rental or for any other reason. Precision Planting makes no other warranty, express or implied.

Questions? Check the website: www.precisionplanting.com or call us at 309-925-5050.