

Singulator Assembly Installation Instructions

Parts List

- 1. Singulator, (1)



Parts You Already Have

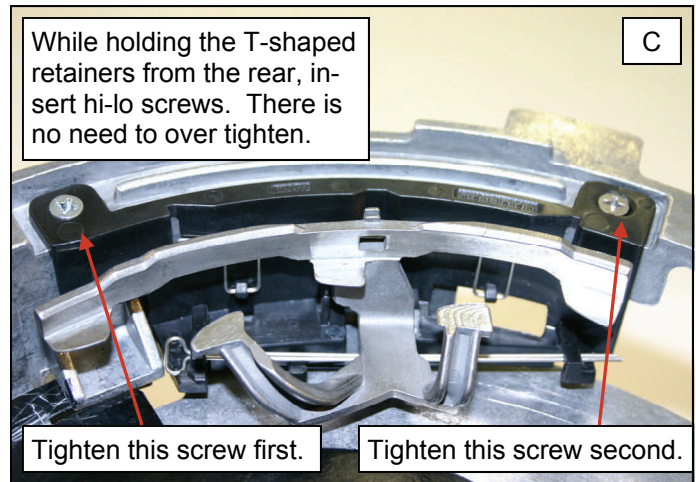
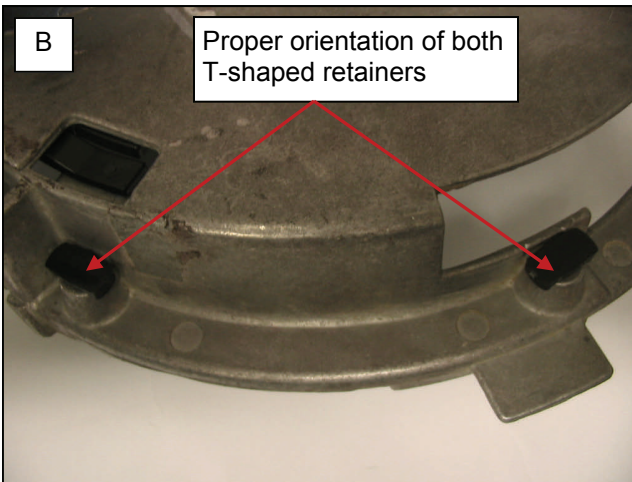
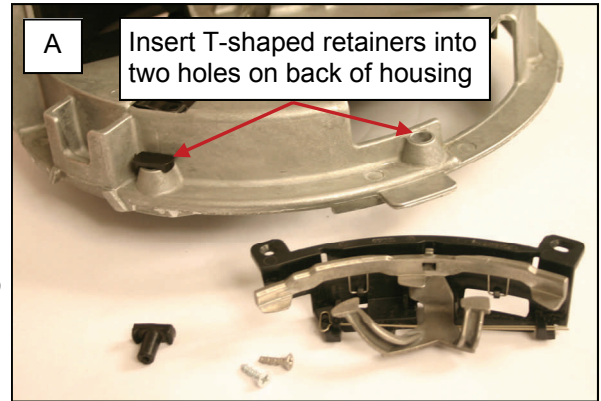
- 1. T-shaped retainers, (2)
- 2. Hi-Lo Screw, (2)



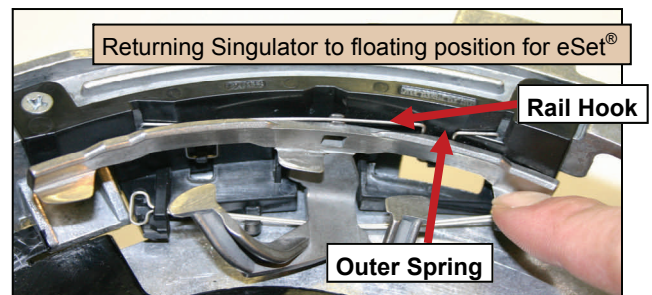
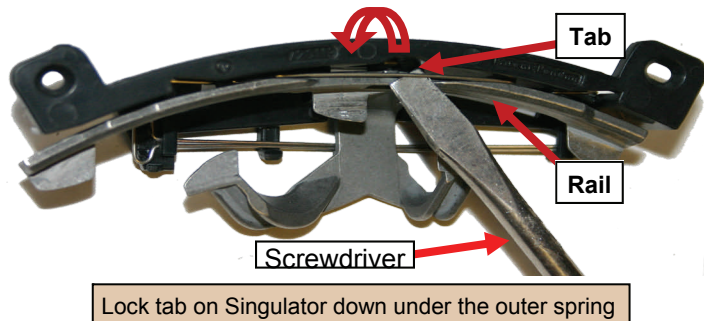
Step 1 Singulator Installation.

If liner is in place, the Singulator assembly can be mounted. Take the two T-shaped retainers that you already have and insert them into the two holes at the top of the meter. (Fig. A & B).

Step 2 Then place the Singulator into location and screw each of two #6 Hi-Lo flat head screws (Fig. C) into the T-shaped retainer. Do not over tighten; the plastic piece only needs to be slightly snug. This completes the installation of the Singulator Assembly.



Singulator: To lock the Singulator out of the way for other crops, simply push down while rotating back on the metal Singulator. Push the Singulator rail under the outer spring. Take a flathead screwdriver then pry up the spring and maneuver the spring over the singulator. Then the spring will click over the tab and snap into the locked position. To return to the unlocked position for eSet®, push down on the right hand lobe of the Singulator and the tab will walk out from under the spring. The Singulator will release into the floating position within the rail hook.



Questions? Check the website: www.precisionplanting.com or call us at 309-925-5050.

