

Note: A lower elevator shaft adjuster must be installed at the bottom of the clean grain elevator so the top shaft of elevator can remain in a fixed position. If not installed there is no way to adjust the tension of the chain.

Step 1: Loosen the drive belt for clean grain elevator by pulling down on the belt and moving the hairpin in the spring rod to keep spring tension released.

Step 2: Remove the bearing and bearing flanges (outer and inner) at lower end of elevator.

Step 3: Install the metal template, using the previously removed (3) bolts, retaining the bearing flanges (see yellow arrows in figure A below).

Step 4: Center punch (4) holes on template using the provided transfer punch (see red arrows in figure A below).

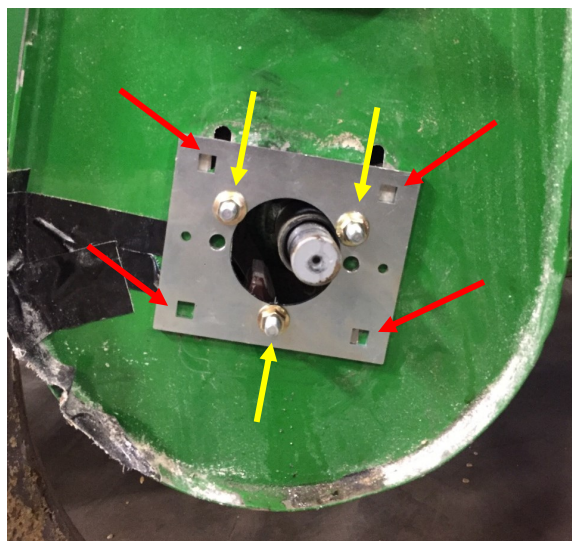


Figure A

Note: Check the position of chain paddles before drilling to avoid contact while drilling through elevator.

Step 5: Using the provided 13/32 in. drill bit, drill out all (4) holes. After drilling, leave the template installed.

Step 6: File out (4) holes using provided square file.

Step 7: Remove drill template.

Step 8: Loosely install the bearing and bearing adapter onto adjuster plate using 3 provided screws.

Step 9: Remove spacer located on the outside sprocket on the clean grain auger shaft. Replace with longer spacer provided.

Step 10: Mount the side plate to the elevator boot using the provided 10mm carriage bolts. Leave side plate loose and ensure that the adjuster slides freely over entire length of slots.



Figure B

Note: Check for interference between the center divider plate of the clean grain elevator and the lower shaft and sprocket. Make sure that you can raise the shaft up to the top of the adjustment.

Note: If interference occurs, a small notch will need to be made on the center divider to allow a full travel of the side plate. To make this notch first drop the shaft to the lowest position.

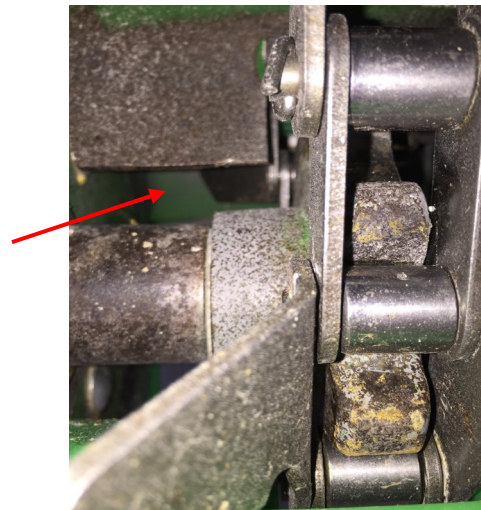


Figure C

Step 11: After full travel of the slide plate is verified, refer to base kit instructions to position the top elevator shaft. Then tighten the lower shaft.